

Nel-Tech Labs, Inc.

Digital Messaging Systems

Message-On-Hold • Background Music Source • Presentations & Exhibits



*Easy One-Touch
MP3 Loading!*

Sonorous™ Model 1

The **Sonorous™ Model 1** is a state-of-the-art digital audio recording and playback device designed to provide a continuous-play audio source for message-on-hold, background music or any other audio application where high-quality audio playback is required. The audio program is loaded from a standard MP3 burned CD using a pure digital-to-digital transfer into a high-density flash memory file system. After audio is loaded the CD can be removed and the audio is played from its 8Ω and 1KΩ output jacks on the rear of the unit.

The Sonorous has a base memory of 64 minutes which can be used for message-on-hold or shorter message applications. For longer message applications such as instore messaging and background music the Sonorous is available with message times up to 51 hours.

The Sonorous is also available with the optional Sonocrypt™ encryption key technology. This technology enables you to protect your units from being loaded with any end-user MP3 file. When a CD is burned for your customer an additional key file must be placed on the CD to make it work. These key files are only supplied to dealers using this feature.

The Sonorous Model 1 is the most versatile digital player of its kind, with a list of features that includes:

- CD-ROM Loadable - using standard MP3's burned onto a CD
- Base memory of 64 minutes @ 32Kbps
- Bit-rates up to 128,000 bits-per-second (CD quality)
- Sample-rates up to 48,000Hz
- Industry standard time-proven CD-ROM drive
- Multi-color LED status indicator
- Sonocrypt™ encryption key technology
- Extruded aluminum & steel construction
- 5-year parts and labor warranty
- Manufactured in the USA

Each Sonorous is built to exacting quality standards using state-of-the-art SMT (surface mount) assembly for outstanding reliability and years of dependable service.

Specifications

Technical

Encoding	MPEG-2 or MPEG-3 (.mp3)
Frequency response	80Hz to 15KHz (depending on sample rate)
Bit Rate	8K to 128K bits per second
Sample Rate	16KHz to 48KHz
Signal to noise	>90dB
File Compression	6:1 to 96:1
Memory type	High-density FLASH
Memory capacity	64 minutes @ 32Kbps (Expandable to 51 hours)
Message capacity	Up to 500 messages
Message loading	CD using built-in CD-ROM drive
Message playback	Continuous
Power supply	110VAC 60Hz to 15VDC 1.6A
Audio output	Mono RCA jack Adjustable volume control Impedance—6V p-p @ 8Ω or 12V p-p @ 1KΩ
Size	3.25" x 9.50" x 9.10" (H x W x D)
Color	Black
Weight	5 pounds (excluding power supply)

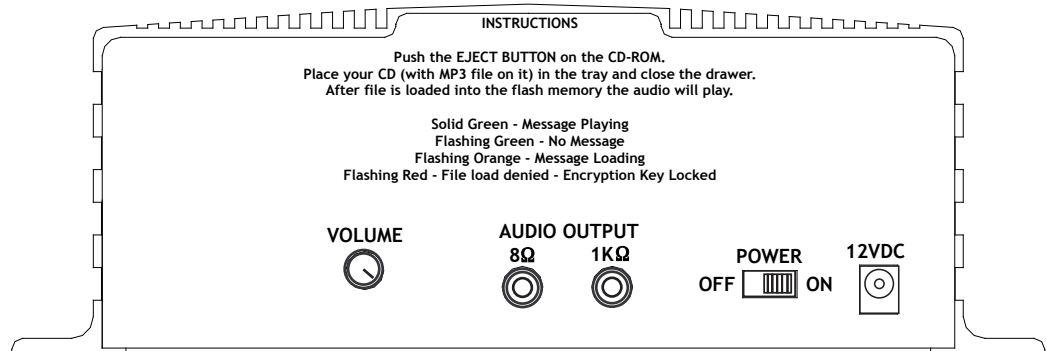
Memory Tables

The bandwidth and bit-rate of your .mp3 audio files determine audio quality, download time, and maximum storage time as shown in the table below.

Bandwidth	Bit-rate	Compression	Message Time (Base)	Message Time (Max)
4KHz	8Kbps	96:1	4.27 Hours	136.53 Hours
4KHz	16Kbps	48:1	2.13 Hours	68.27 Hours
8KHz	24Kbps	32:1	1.33 Hours	42.67 Hours
8KHz	32Kbps	24:1	64 Minutes	34.13 Hours
11KHz	48Kbps	16:1	40 Minutes	21.33 Hours
11KHz	64Kbps	12:1	32 Minutes	17.06 Hours
15KHz	96Kbps	8:1	20 Minutes	10.67 Hours
15KHz	128Kbps	6:1	16 Minutes	8.53 Hours

Message times available in 64 minute increments (Based upon 32Kbps)

Back View



Nel-Tech Labs, Inc. • 101 Zachary Road • Manchester, NH 03109-5609
 800.344.4685 • 603.641.8844
 www.nel-techlabs.com • sales@nel-techlabs.com