



DSU II™ Feature Highlights

5-Party Conferencing - Conference up to four outside lines from any extension.

Automatic Routing - The DSU II system can automatically route your calls to maximize advantage of discounted dialing services.

Call Accounting - The system can store call information and report by line station or account code.

Call Record - Any call can be recorded by a station user and saved for future reference. (Requires use of DSU II voice mail)

Call Screening - Any user can screen incoming calls and determine if the call should be answered or left in voice mail. (Requires use of DSU II voice mail)

Caller ID Support - Caller ID is displayed in the LCD of the Impact Family telephones. The Caller ID information also appears in system printouts.

Subdued Off-hook Voice Announce - While on a call, receive a "whispered message" through your handset without interrupting your current call.

Departmental Call Distribution - Allows calls to intelligently hunt for an available station within departments or groups.

Toll Restriction - Restriction from calling certain numbers outside of the DSU II system.

A Proven and Dependable System

This traditional communications system is part of Comdial's classic line of business systems. With more than 200 standard features, Comdial's DSU II telephone system provides your business with the unique combination of style and performance in a single unitized cabinet. This ensures that your system will be easy to install, easy to use and easy to maintain. DSU II will exceed your small business communications needs.

Feature-Rich Telephones

Comdial's DSU II system supports the Impact SCS and Impact family of telephones. They offer a solution for every individual's needs: from display telephones with speakerphone to digital single line telephones. For workers on the move, try our digitally integrated wireless handset. The DSU II also offers support for analog devices including fax machines and wireless telephones.

Sophisticated Voice Mail

Messaging is a basic business requirement today, enhancing the efficiency and professionalism of your business. The DSU II system is integrated with a variety of messaging solutions ranging from small/affordable systems to NT-based Unified Messaging Platforms. Integrating the DSU II with a messaging solution provides features like call screening, call recording, automated attendant, dial by name directory and flexible message notification.

Commitment to Service

At Comdial, we're dedicated to providing unsurpassed service and support to help protect your investment in communications equipment. With a nation network of authorized dealers, we are well equipped to respond to your unique hardware and software needs.

Our dealers have been specially trained and certified to sell, install, maintain and provide knowledgeable support for our products. Plus, Comdial backs its dealer network with exceptional technical support services available 24 hours a day, 7 days a week.

COMDIAL®

Phone Care, Inc.
20142 Ecorse Road
Taylor, MI 48180
(313) 388-9670

Dimensions

Width: 16.5"
Height: 21.3"
Depth: 3.8"
Weight: 17.5 lbs.

Power Requirements

AC Power: 90-129 VAC (single phase)
Amps: .6A
Watts: 70W

Switching Principle

Digital, pulse code modulated/time division multiplexed (PCM/TDM) provides non-blocking switching with stored program control.

FCC Registration Numbers

CVWUSA-61535-KF-E (key system)
CVWUSA-61536-MF-E (hybrid system)

Operating Environment

Temperature: 32-122° F (0-50° C)
Humidity: 90 percent relative, non-condensing
Heat Dissipation: 1474 BTUs per hour

Unitized Expansion Module

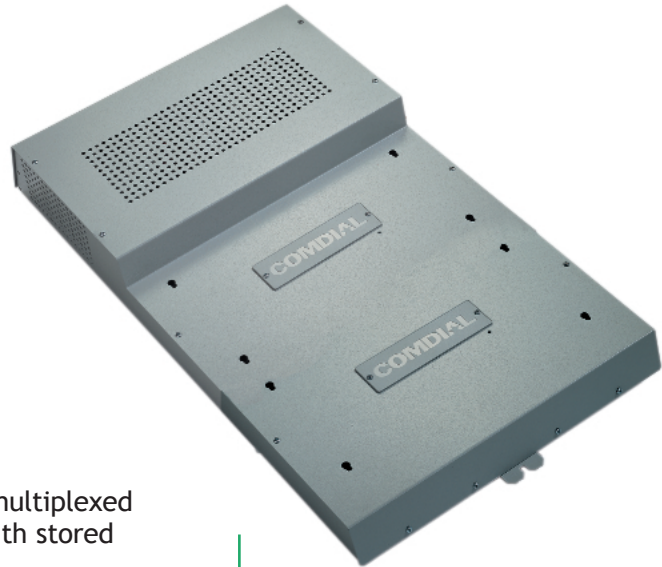
JM408: 4-line, 8-station expansion unit
JM008: 0-line, 8-station expansion unit

Station Cable Requirements

2-wire (1 pair) twisted, non-shielded for IST, 24 AWG
2-wire (1 pair) non-shielded for proprietary digital phones, 24 AWG
Maximum Length: 1000 feet

Accessories

Analog telephone support, caller ID, integrated wireless telephone (Scout), integrated voice messaging



DSU II General Specifications

Maximum Lines	16
Maximum Stations	32
Intercom Paths	Non-blocking
Base Unit	8x16
Expansion Module Capacity	2
Paging Ports	1
Park Orbits	9
System Speed Dials	99
Power Fail Circuits	1
Station Message Detail Storage	1600

Phone Care, Inc.
20142 Ecorse Road
Taylor, MI 48180
(313) 388-9670

COMDIAL®

106 Cattlemen Road
Sarasota, Florida 34232
1-800-COMDIAL
www.comdial.com

Copyright © 2002 by Comdial Corporation. All rights reserved. Comdial is a registered trademark. DSU II, Scout, and the Comdial logo are trademarks of Comdial Corporation.

Printed in the U.S.A.,
BS-244872 Rev. 4